

White Spots on CT Scan of Brain

Gökhan Aksel¹, Şeref Kerem Çorbacıoğlu²

¹Clinic of Emergency Medicine, Ümraniye Education and Training Hospital, İstanbul, Turkey

²Clinic of Emergency Medicine, Antakya State Hospital, Hatay, Turkey

Case 1

An 81-year-old male presented to the emergency department (ED) with falling at floor level. He complained of pain of the left parietal area and left wrist. At the time of admission, his vital signs and neurological examination were normal and Glasgow coma scale score (GCS) was 15. Physical examination revealed 1x2-cm tender swelling in his left parietal area and a tenderness on his left wrist. X-ray of the wrist and non-enhanced computed tomography (CT) of the head were performed, and he was diagnosed with a distal radius fracture. The patient's head CT is shown in Figure 1.

Case 2

A 69-year-old male presented to the ED with a motorcycle accident. He had head trauma and did not remember what happened. When he arrived to the ED, the patient's vital signs were normal. Neurological examination revealed only amnesia, and other system examination findings were normal. Non-enhanced CT of head was performed, and it is shown in Figure 2.

Questions

- Q1. What are the abnormalities seen in the patients' head CTs?
- Q2. What are the diagnoses?
- Q3. Is there any relation between the patients' traumas and head CTs?

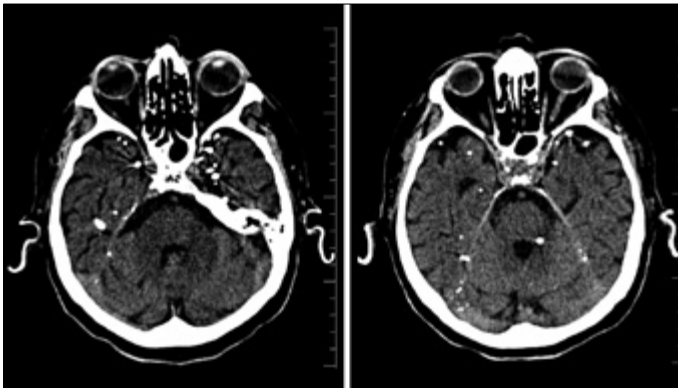


Figure 1. CT scan of brain of Case 1

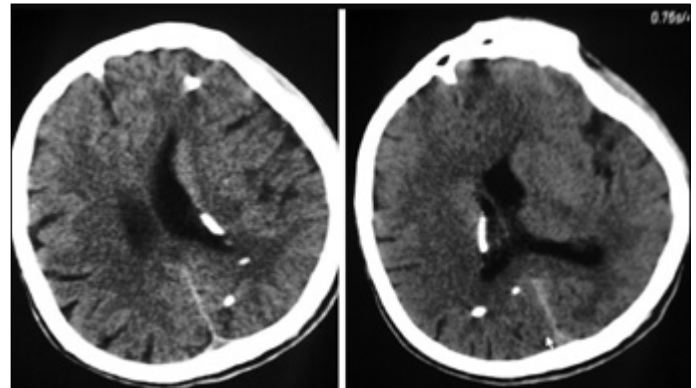


Figure 2. CT scan of brain of Case 2

Answer: p. 156

Correspondence to: Gökhan Aksel; Clinic of Emergency Medicine, Ümraniye Education and Training Hospital, İstanbul, Turkey
Phone: +90 505 350 86 90 e-mail: aksel@gokhanaksel.com

Received: 24.06.2014 **Accepted:** 02.07.2014

©Copyright 2014 by Emergency Physicians Association of Turkey - Available online at www.akademikaciltip.com
DOI: 10.5152/jaem.2014.369

